



# **Electronic Working Papers System**

## **Microsoft SQL 2005 Express Installation Guide**

**Notice**

The Copyright in this work is vested in EPAAS Limited and the document is issued in confidence for the purpose only for which it is supplied. It must not be reproduced in whole or in part or used for tendering or manufacturing purposes except under an agreement or with the consent in writing of EPAAS Limited and then only on the condition that this notice is included in any such reproduction. No information as to the contents or subject matter of this document or any part thereof arising directly or indirectly there from shall be given orally or in writing or communicated in any manner whatsoever to any third party being an individual firm or company or any employee thereof without prior consent in writing by EPAAS Limited

**Copyright © EPAAS Limited 2008, 2009, 2010**

# Table of Contents

<b>1</b>	<b>ABOUT THIS DOCUMENT .....</b>	<b>4</b>
1.1	PURPOSE.....	4
1.2	SCOPE.....	4
1.3	DOCUMENT CONVENTIONS.....	4
1.4	OTHER RELATED DOCUMENTS .....	4
<b>2</b>	<b>SYSTEM REQUIREMENTS .....</b>	<b>5</b>
2.1	NETWORK SERVER.....	5
2.2	CLIENT PC .....	5
<b>3</b>	<b>INSTALLATION PREREQUISITES .....</b>	<b>6</b>
<b>4</b>	<b>MICROSOFT SQL EXPRESS 2005.....</b>	<b>7</b>

# 1 About this Document

## 1.1 Purpose

This is an Installation manual for installing Microsoft SQL Express 2005 for EWPS application.

## 1.2 Scope

This document contains information necessary and sufficient to install Microsoft SQL Express 2005 for EWPS.

## 1.3 Document Conventions

The following conventions are used in this document:

Content is arranged based in Installation Wizard screens.

All Menu options appear in **bold** face.

All System message appear *italicized*.

Screenshots have been included where necessary.

## 1.4 Other Related Documents

EWPS Product Installation Manual

EWPS User Manual

# 2 System Requirements

Before you install EWPS, make sure that your computer and/or network server meets the following hardware requirements:

## 2.1 Network Server

---

Processor	Intel® Pentium® III or higher
Number of processors	1
Processor core	4 or 2 or 1
Minimum memory	1 GB
Minimum Hard Disk Space	40GB

---

## 2.2 Client PC

---

Processor family	Intel® Pentium® III or higher
Number of processors	1
Minimum memory	0.5 GB RAM
Minimum Hard Disk Space	300 MB

---

# 3 Installation Prerequisites

Before you install Microsoft SQL Express 2005 SP3, it is mandatory to have Microsoft .NET framework minimum v2.0 installed on the PC or server.

You can download the framework from the Microsoft website and install it on the computer. Here is a link to the relevant page on the Microsoft Website:

<http://www.microsoft.com/downloads/details.aspx?FamilyID=AB99342F-5D1A-413D-8319-81DA479AB0D7&displaylang=en>

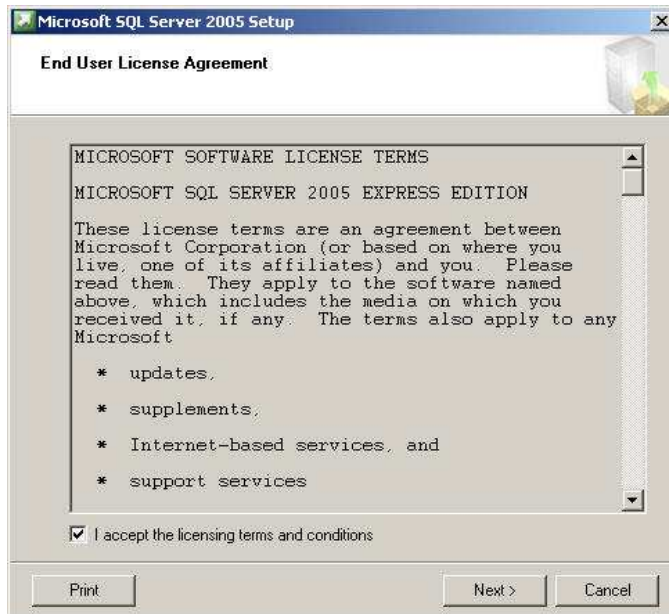
# 4 Microsoft SQL Express 2005

If you do not have Microsoft SQL Express 2005, then download Microsoft SQL Server 2005 from the Microsoft website. Here is the link you can use to access the download page:

<http://www.microsoft.com/Sqlserver/2005/en/us/express-down.aspx>

Follow the steps below to install Microsoft SQL Express 2005:

- a) Double click on SQL Express Setup file. The installation wizard opens at the Microsoft SQL Server 2005 License Agreement page, see figure below.



Select the check box to accept the agreement and click **Next** to continue.

- b) The Installation Prerequisites screen is displayed, see figure below.



Click Install. It begins to install all the prerequisites, see figure below.

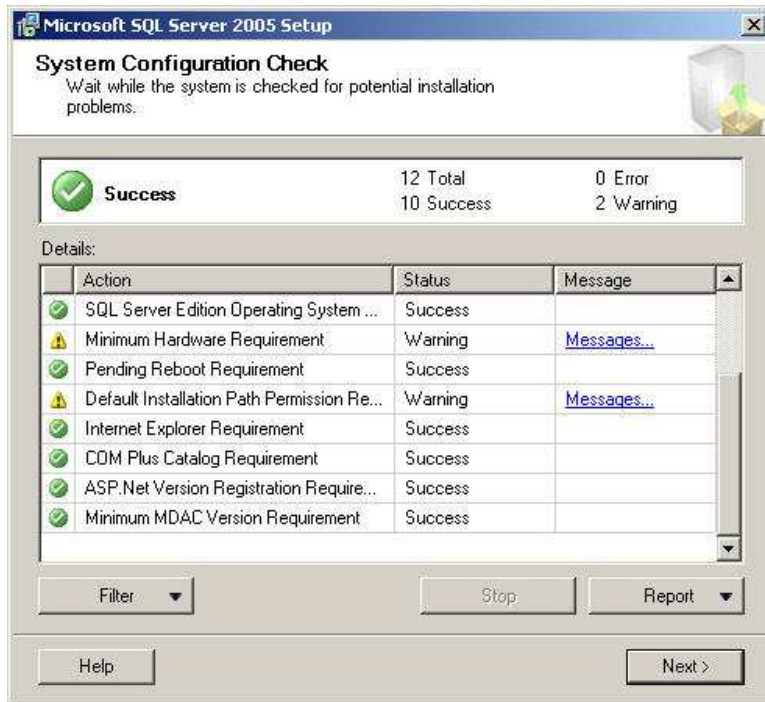


Wait till the installations are complete (that is, the blue strip fills from left to right) and click **Next**.

- c) The installation moves to the Microsoft SQL Server 2005 installation wizard screen, see figure below.



- d) Click **Next**. It checks for any potential installation problems and moves to the next screen, see figure below.

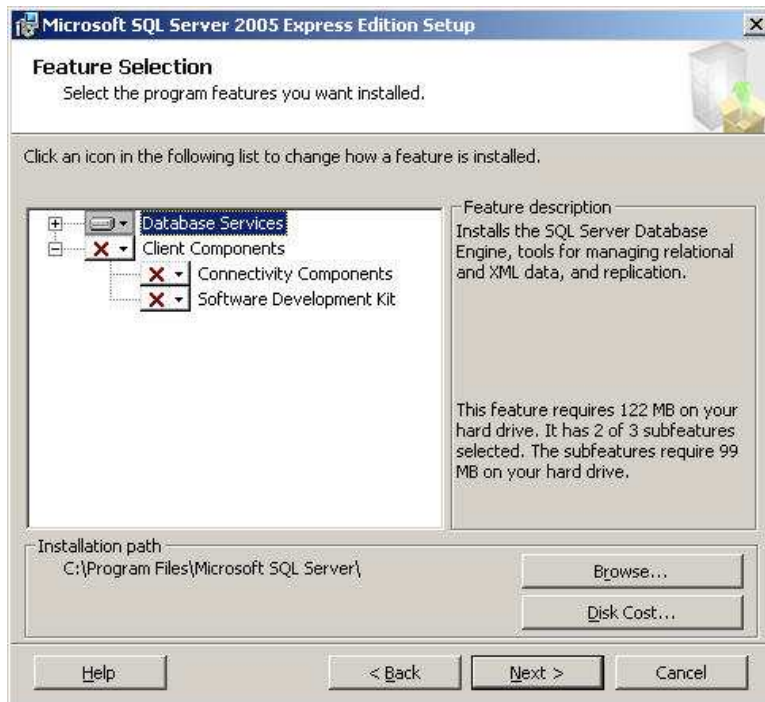


- e) Click **Next**. The installation will automatically gather registration information of the computer and display it on the next screen. There is no need to modify this information, see figure below.

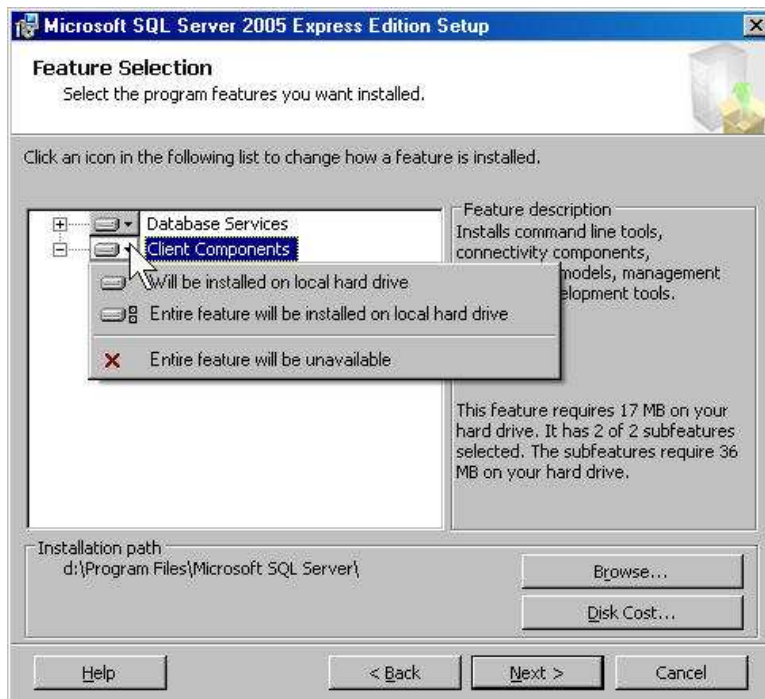
**Note:** The registration information on this figure will not be the same as what you see on your computer.



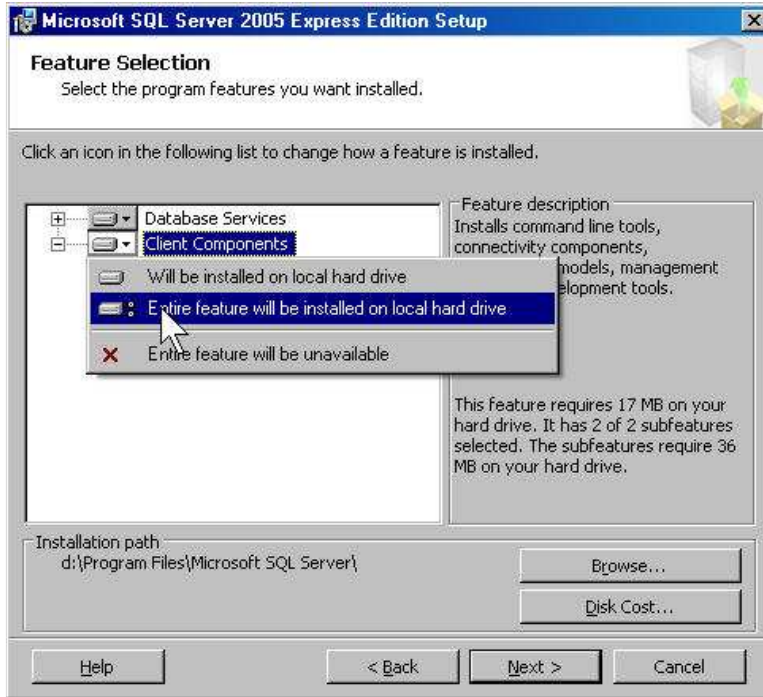
f) Click **Next**. The Program Feature selection screen is displayed, see figure below.



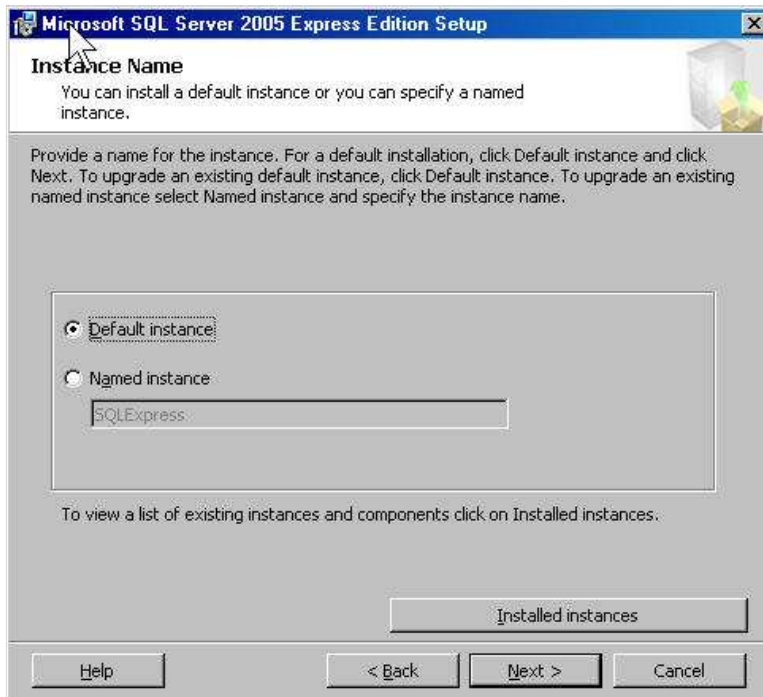
g) Click the down-pointing arrow next to "Client Components" (indicated by the mouse pointer in the figure below). A list of client components is displayed.



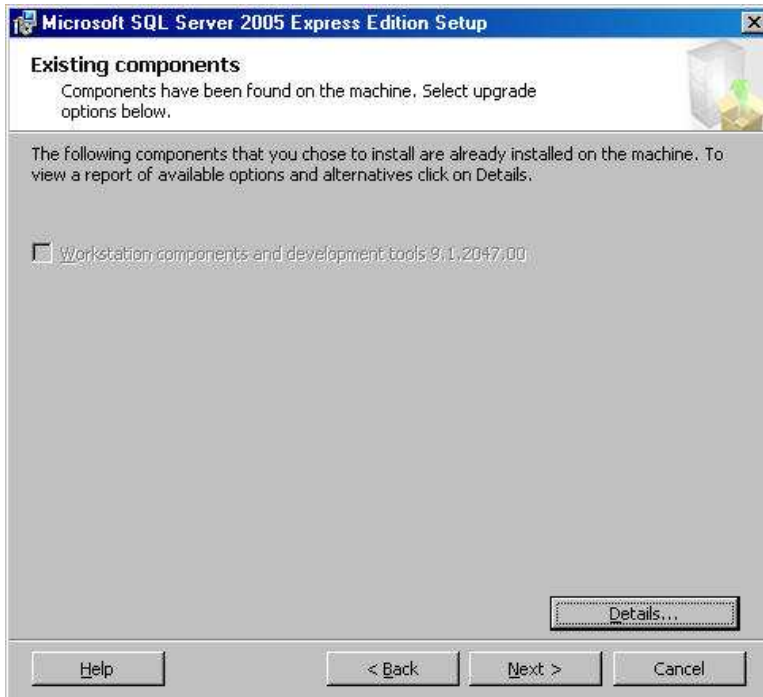
- g) Select the option with title "Entire feature will be installed on local hard drive" (indicated by the mouse pointer in the figure below).



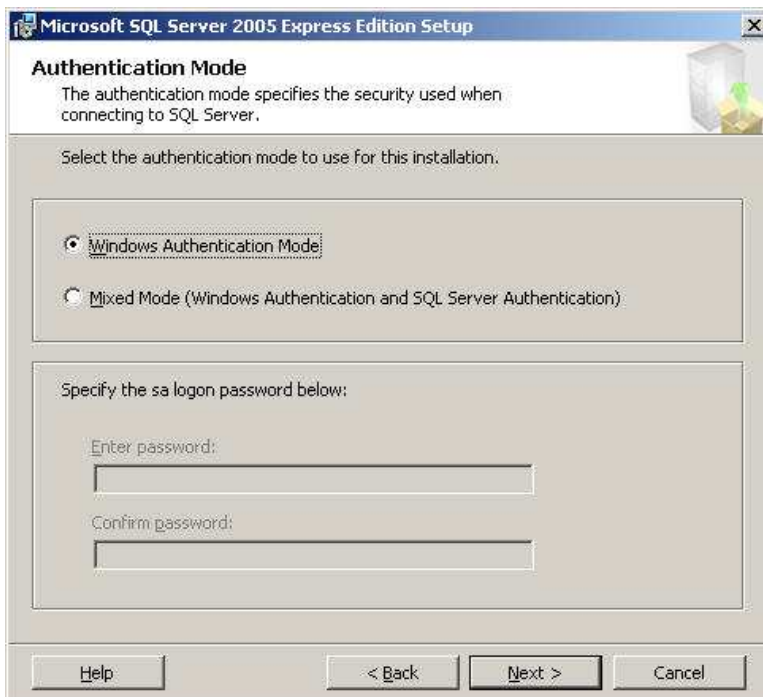
- h) Click **Next**. The Instance Name screen is displayed, see figure below.



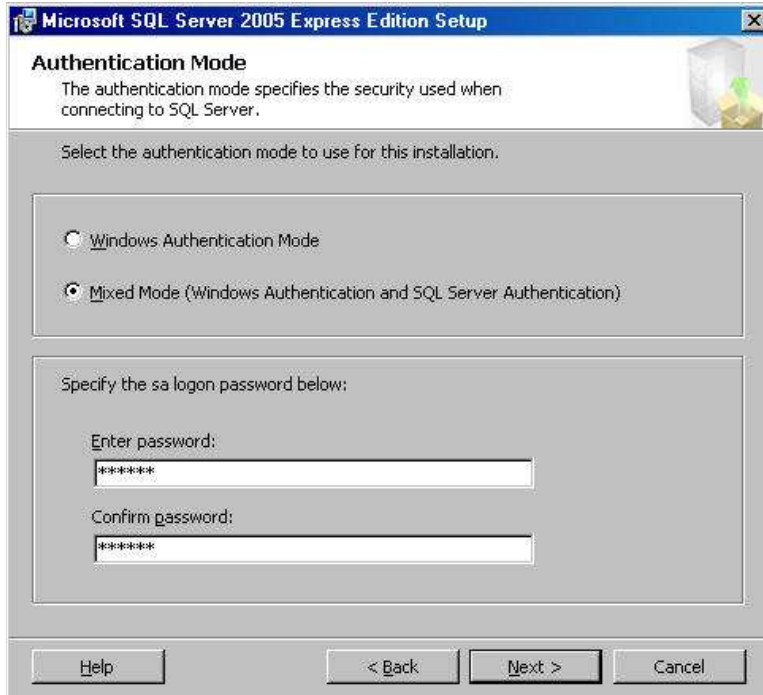
- i) Select "Default Instance" and click **Next**. The Existing Components screen is displayed. If this is the first installation of Microsoft SQL Express 2005 on the computer, then there will not be any components to display. For this reason, the screen looks blank, see figure below.



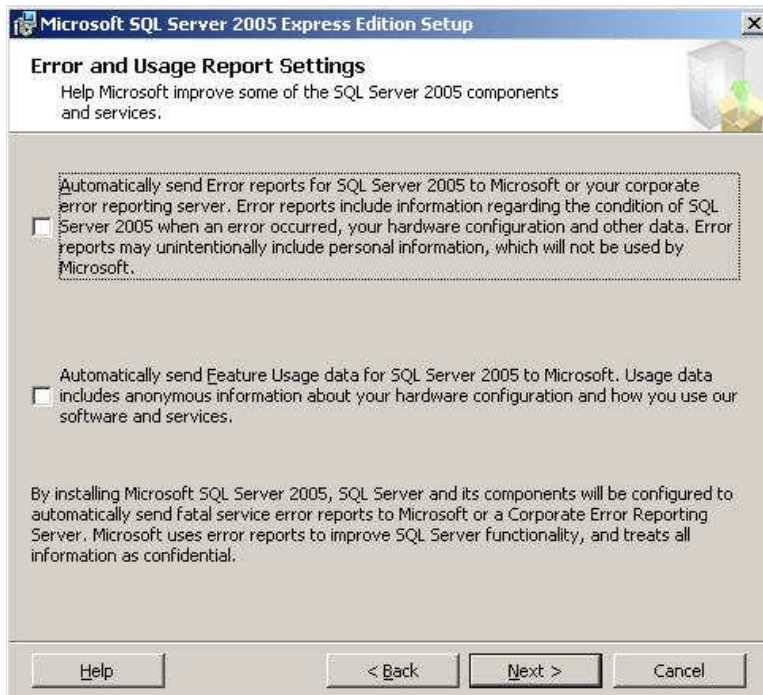
- j) Click **Next**. The Authentication Mode screen is displayed, see figure below.



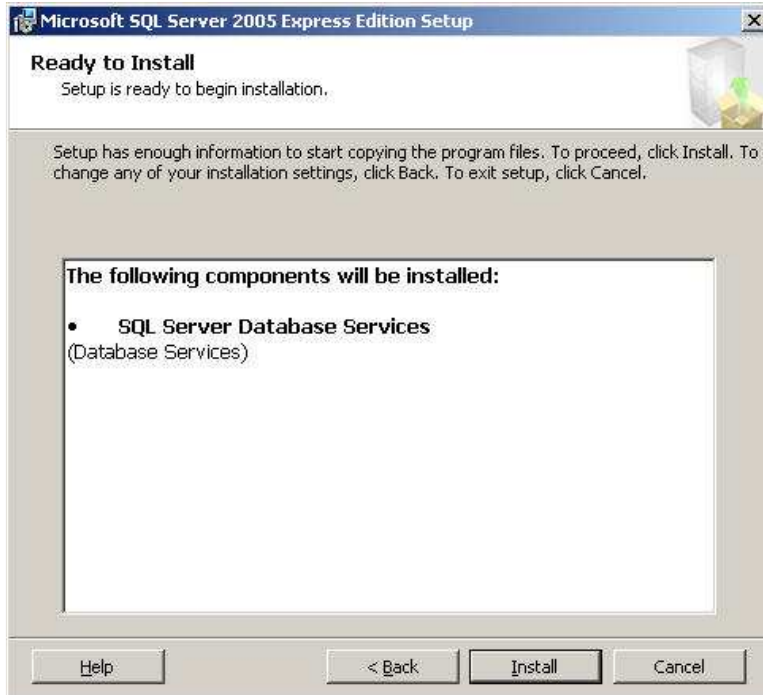
- j) Select "Mixed Mode" and enter the password, "password" in the fields provided for this purpose, see figure below.



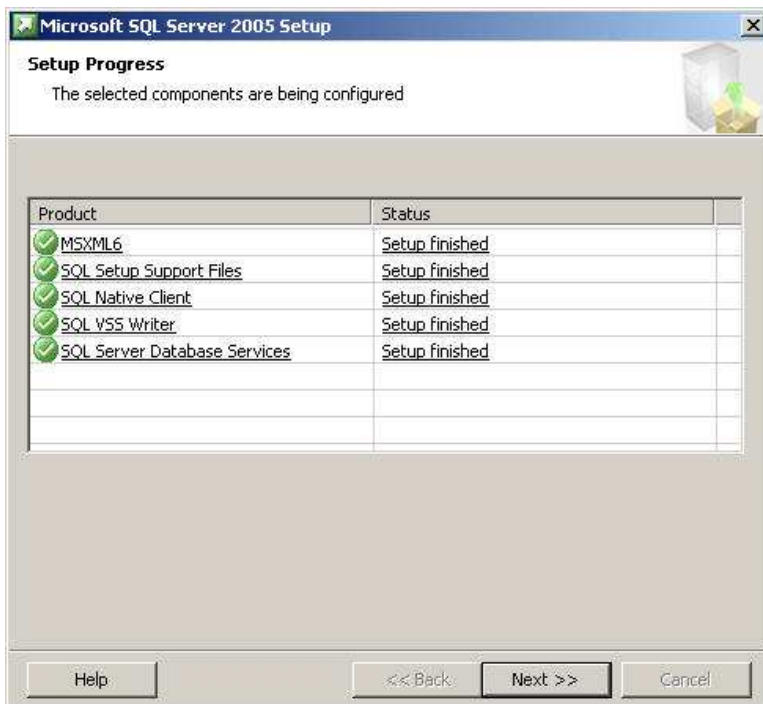
- k) Click **Next**. Error and Usage Report Settings screen is displayed, see figure below.



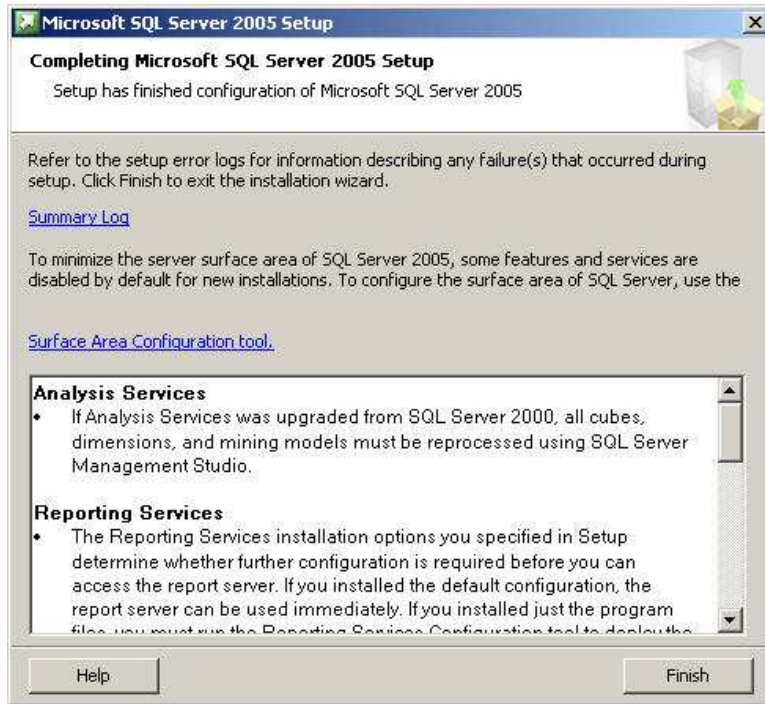
- l) There is no need to change anything on this screen. Click **Next**. The Ready to Install screen is displayed, see figure below.



- m) Click **Install**. The installation begins and progresses to the next screen, see figure below.



n) Click **Next**. The installation completion screen is displayed, see figure below.



Click **Finish**. This completes the installation of Microsoft SQL Express 2005 on the computer.

To confirm that Microsoft SQL Server 2005 Express has been installed successfully, on the Start menu, click Programs. Microsoft SQL Server 2005 Express will now appear among the list of programs.